



INFORMATION BROCHURE

TABLE OF CONTENT

GREEN SCHEME OBJECTIVES	4
1. BACKGROUND	5
2. ORGANISATION	6
2.1 Managing Director's Office	6
2.2 Chief Operating Officer	6
2.3 Agronomy	6
2.4 Engineering	6
2.5 Finance and Administration	7
2.6 Internal Audit	7
2.7 Green Scheme Farm Management	7
3. OPERATIONAL ENVIRONMENT	8
3.1 Project Management	8
3.1.1 Management of the State-owned Project	8
3.1.2 Profit-sharing Agreement	8
3.1.3 Lease Agreement: each party partially owns the project assets	8
3.1.4 Lease Agreement: Government Owned Property	8
4. EXISTING GREEN SCHEME PROJECTS	9
4.1 Etunda Green Scheme Irrigation Project	9
4.2 Hardap Green Scheme Irrigation Project	9
4.3 Kalimbeza Green Scheme Irrigation Project	9
4.4 Mashare Green Scheme Irrigation Project	9
4.5 Musese Green Scheme Irrigation Project	10
4.6 Ndonga Linena Green Scheme Irrigation Project	10
4.10 Orange River Green Scheme Irrigation Project (ORIP)	10
4.7 Shadikongoro Green Scheme Irrigation Project	10
4.8 Shitemo Green Scheme Irrigation Project	10
4.9 Sikondo Green Scheme Irrigation Project	11
4.11 Uvhungu Vhungu Green Scheme Irrigation project	11
5. PROJECTS UNDER DEVELOPMENT	11
6. FUTURE PLANNED PROJECTS	11
7. TYPE OF CROPS PRODUCED BY GREEN SCHEME	12-13
8. CONTACT DETAILS	14-15

HIGH LEVEL STATEMENTS

VISION

*A self sustaining
food growing
Namibia, feeding
her nation
and beyond*

CORE VALUES

*Accountability
Integrity
Passion
Sustainability
Team work
Transparency*

MISSION

we facilitate sustainable growth of agronomic production through creative partnership, building capacity and improved technology and information management

GREEN SCHEME OBJECTIVES

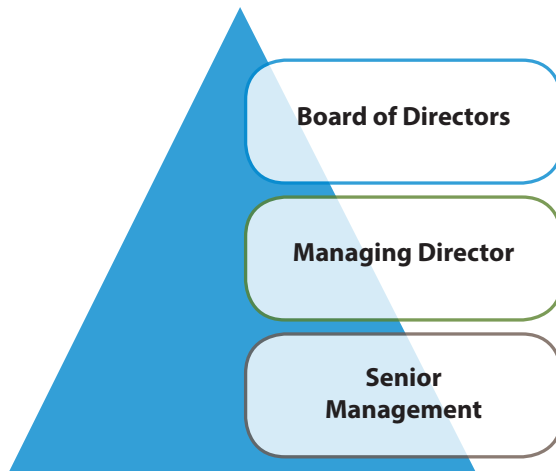
The objectives of the Green Scheme relate to:

- The increase of domestic agricultural production and sector contribution to the Gross Domestic Product (GDP);
- The promotion of investment in agronomic production and the domestic food industry;
- The mobilisation of private and public capital for investment in agriculture;
- The promotion of food security at household and national levels;
- The diversification of agricultural production and products for domestic consumption and export;
- The promotion of research and technology adaptation to increase productivity;
- The promotion of value-addition and job creation;
- The promotion of skills and technology development and transfer.

1. BACKGROUND

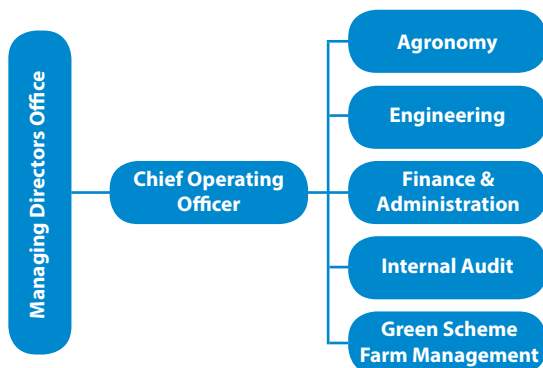
AGRIBUSDEV (Agricultural Business Development Agency) is a state-owned enterprise (SOE) governed by the SOEG Act with the mandate 'to monitor and create the ideal environment for the Green Scheme' in order to achieve the objectives of the Namibian government's Green Scheme Policy. Before it was registered as a Section 21 company under the Company Act 2004, AGRIBUSDEV functioned as a unit of agronomic production within the Ministry of Agriculture, Water and Forestry (MAWF). On 15 April 2013, it became operational as a fully-fledged state-owned enterprise (SOE) and currently has eleven (11) projects registered under the Green Scheme Programme. The projects are located all over Namibia with many of those concentrated in Kavango East and West along the Kavango River. The Green Scheme is geared towards diversifying domestic agronomic production among others.

AGRIBUSDEV COMPANY STRUCTURE



AGRIBUSDEV is under leadership of a Board of Directors consisting of members from various governmental institutions. A managing director reports to the Board and is also responsible for operations. Designated senior managers report to the managing director and head various departments in the company. Due to the nature of its mandate, AGRIBUSDEV often requires specialised skills and as such makes use of project managers specialising in crop production, who are included in the ranks of senior management.

2. ORGANISATION



2.1 MANAGING DIRECTOR'S OFFICE

The managing director's office is supported in its primary functions of supervision and strategic alignment of the company's activities with the objectives of the Green Scheme by technical inputs from the various and specialised departments within AGRIBUSDEV.

2.2 CHIEF OPERATING OFFICER

The Chief Operating Officer of AGRIBUSDEV ensures the implementation and monitoring of activities at AGRIBUSDEV with an emphasis on operational policies and regulations.

2.3 AGRONOMY

The agronomy department at AGRIBUSDEV provides advisory services and expertise to all farmers registered with the Green Scheme; as well as outside the scheme in both commercial and communal land periphery. The core services and expertise provided by this department relate to the cropping calendar, soil pH testing as well as the application of fertilisers and chemical treatment of crops.

2.4 ENGINEERING

The engineering unit at AGRIBUSDEV is primarily responsible for designing infrastructure that adequately responds to increased food production through appropriate innovation and technology. It also ensures for the maintenance of existing irrigation facilities.

2.5 FINANCE AND ADMINISTRATION

The finance and administration department at AGRIBUSDEV ensures for the smooth running of the day-to-day activities of the entire organisation and is also the largest department within AGRIBUSDEV compared to other departments in terms of staff composition.

2.6 INTERNAL AUDIT

The internal auditing department at AGRIBUSDEV puts in place internal check and control mechanisms to ensure that organisational operational guidelines are standardised for effective monitoring and evaluation in line with corporate goals.

2.7 GREEN SCHEME FARM MANAGEMENT

The Green Scheme projects under AGRIBUSDEV are headed by farm managers who specialise in the production of specific crops. The farm managers are appointed to this division because of the specialised set of skills and knowledge they possess.

3. OPERATIONAL ENVIRONMENT

3.1 PROJECT MANAGEMENT APPROACH

AGRIBUSDEV grants investors flexibility with regards to approaches in the management of Green Scheme projects depending on the desired socio-economic outcome but in essence, recommends four (4) approaches with the aim to stimulate development in accordance with the Green Scheme Policy:

3.1.1 MANAGEMENT OF A STATE-OWNED PROJECT

Companies or individuals may apply to manage a Green Scheme project and under the terms and conditions of the contract, the Ministry of Agriculture, Water and Forestry (MAWF) develops and owns all capital infrastructure at project level, while AGRIBUSDEV maintains and manages the assets on behalf of MAWF. A managing company or individual is provided with a performance contract detailing expected targets, deliverables and the conditions of termination. The management company or individual is similarly obliged to avail its financial information and position to AGRIBUSDEV as part of the reporting requirements.

3.1.2 PROFIT-SHARING AGREEMENT APPROACH

A profit-sharing agreement between the Ministry of Agriculture, Water and Forestry (MAWF) and an investor is entered into when the investor has made any or a significant contribution towards a project and the fundamental obligations of the Ministry. Under normal circumstances, the Ministry of Agriculture, Water and Forestry (MAWF) is responsible for developing projects, replacement, upgrade and expansion of all projects under the Green Scheme. Appropriate compensation is normally agreed upon by the two parties prior to the undertaking of an investment and the parties also agree on the basis of profit-sharing for each party whilst not compromising the operation of the project. Investors are expected to assume responsibility for all operational costs.

3.1.3 LEASE AGREEMENT: PARTIAL OWNERSHIP OF PROJECT ASSETS

Lease agreements are entered into between AGRIBUSDEV and investors on projects where the project assets are partially owned by both, or by the Ministry of Agriculture, Water and Forestry (MAWF). Projects under the Green Scheme are assigned to investors as is, in other words 'voetstoots', with or without movable property. The obligation of development and delivery falls upon the investor. The investor is also responsible for the operational costs of the project and any additional development desired.

3.1.4 LEASE AGREEMENT: STATE-OWNED PROPERTY

In terms of lease agreements involving state-owned property, the Ministry of Agriculture, Water and Forestry (MAWF) is wholly responsible for setting up, expanding and upgrading all movable and immovable properties at the project. Parties sign a lease agreement to define the terms and conditions of the lease.

4. EXISTING GREEN SCHEME PROJECTS

4.1 ETUNDA GREEN SCHEME IRRIGATION PROJECT

The Etunda project is the largest farm in the Green Scheme in terms of size of land and volume of production. The project is situated 45km west of Outapi in northern Namibia, and while the total farm land earmarked for production is 1200 hectares, currently only 900 hectares are under production. Etunda is divided into two (2) segments of 450 hectares each for small scale and commercial farming. Sixty-seven (67) small scale farmers occupying three (3) hectares each and ten (10) medium scale farmers utilise the project. The project concentrates on harvesting maize and wheat, annually and the farm is managed through contract agreement. The remaining 300 hectares are currently being developed.

4.2 HARDAP GREEN SCHEME IRRIGATION PROJECT

The Hardap project is situated 10km before Mariental in southern Namibia, along the B1 highway. The project covers 96.5 hectares of which 73 hectares are currently under production. Fourteen (14) medium scale farmers are registered with the Hardap project and each farmer has six (6) hectares assigned for production. Commercial production covers 12.5 hectares of the project. There is currently no provision for small-scale farmers, although plans are under way to accommodate them in future. The Hardap project is also managed through contract agreement.

4.3 KALIMBEZA GREEN SCHEME IRRIGATION PROJECT

The Kalimbeza project is situated 56km north-east of Katima Mulilo in the Zambezi Region. The total farm land is 229 hectares of which only 144 hectares are currently irrigated. Five (5) small-scale farmers occupying three (3) hectares each were placed on the project, while 114 hectares are used for commercial farming. The Kalimbeza project produces three (3) varieties of rice and a smaller section of the farm is used for scientific trials of rice crop with the intention to expand to larger scale production based upon growth and performance. Kalimbeza is also managed through contract agreement.

4.4 MASHARE GREEN SCHEME IRRIGATION PROJECT

The Mashare project is situated 50km east of Rundu in Kavango West. The project covers an area of 130 hectares of which 127 hectares are currently irrigated and under production. The project is earmarked to expand with an additional 300 hectares. At present, there is no provision made for small or medium-scale farmers on the project because the entire farm is confined to commercial production. There are plans underway to accommodate medium-scale farmers in the future once the additional 300 hectares are available and completed. The project is managed by Mashare (Pty) Ltd. through a lease agreement with the Ministry of Agriculture, Water and Forestry (MAWF).

4.5 MUSESE GREEN SCHEME IRRIGATION PROJECT

The Musese project is situated 85km west of Rundu in Kavango West. The total farmland is 1000 hectares of which only 450 hectares are currently under commercial production. Killarney (Pty) Ltd. is managing the project through a lease agreement with the Ministry of Agriculture, Water and Forestry (MAWF). The farm has made provision for small-scale farmers which is currently being developed.

4.6 NDONGA LINENA GREEN SCHEME IRRIGATION PROJECT

The Ndonga Linena is situated 75km east of Rundu in Kavango West. The farm covers a total land area of 1000 hectares of which currently only 506 hectares are under commercial and small-scale production. A total of 332 hectares are utilised by commercial farming and 174 hectares are under small-scale farming. Twenty-nine (29) small-scale farmers are part of the project each occupying 6 hectares. The project is managed by Shikunino Trading Enterprise (Pty) Ltd. through a profit-sharing agreement with the Ministry of Agriculture, Water and Forestry (MAWF).

4.10 ORANGE RIVER GREEN SCHEME IRRIGATION PROJECT (ORIP)

The Orange River Irrigation Project or ORIP is situated on the extreme southern border of Namibia in Noordoewer in the //Karas Region. The farm covers a total land area of 600 hectares of which 232 are currently under production. The farm is divided into commercial and small-scale farming areas of which the largest section of 152 hectares is under commercial production. Small-scale farming covers 80 hectares. The Orange River is the primary source of water for irrigation. ORIP is managed by Cool Fresh Namibia through a profit-sharing agreement with the Ministry of Agriculture, Water and Forestry (MAWF). ORIP yields grape cultivars annually of which 80% is exported.

4.7 SHADIKONGORO GREEN SCHEME IRRIGATION PROJECT

The Shadikongoro project is situated 180km east of Rundu in Kavango West. The farm covers an area of 590 hectares of which 300 hectares are used for commercial farming and 90 hectares are occupied by small-scale farmers. Fourteen (14) small-scale farmers are part of the project of which 12 have 6 hectares each and 2 have 9 hectares each. Shadikongoro is managed through contract agreement with the Ministry of Agriculture, Water and Forestry (MAWF).

4.8 SHITEMO GREEN SCHEME IRRIGATION PROJECT

The Shitemo project is situated 80km east of Rundu in Kavango West. The farm covers an area of 1000 hectares of which only 420 hectares is fitted with irrigation infrastructure. The farm is currently utilised for commercial farming by AGRI-PRO Namibia (Pty) Ltd. under lease agreement with the Ministry of Agriculture, Water and Forestry (MAWF).

4.9 SIKONDO GREEN SCHEME IRRIGATION PROJECT

The Sikondo project covers a total land area of 850 hectares of which 580 hectares are used for commercial farming, and 270 hectares are used for medium-scale farming. Nine (9) medium-scale farmers occupy 30 hectares each. The Sikondo project is directly through contract agreement with the Ministry of Agriculture, Water and Forestry (MAWF).

4.11 UVHUNGU VHUNGU GREEN SCHEME IRRIGATION PROJECT

The Uvhungu Vhungu project is situated approximately 10km east of Rundu in Kavango West. The farm has a total land surface of 825 hectares of which only 380 hectares are under full production. Commercial farming occupies 320 hectares and 60 hectares are occupied by ten (10) small-scale farmers. The project is directly managed through a contract agreement with the Ministry of Agriculture, Water and Forestry (MAWF). A dairy farm is also currently being developed.

5. PROJECTS UNDER DEVELOPMENT

AGRIBUSDEV currently has five (5) projects under development:

- Katima Farm in the Zambezi Region (250 hectares);
- Tandjieskoppe in the //Karas Region (1000 hectares);
- Liselo in the Zambezi Region (1500 hectares).

6. PLANNED FUTURE PROJECTS

AGRIBUSDEV is currently planning for projects in the following regions of Namibia to be rolled out in the near future:

- Kavango West (Zone)
- Oshikoto Region (Tsumeb).

7. GREEN SCHEME: TYPES OF CROP PRODUCTION

Crop Type	Project Name										
	Etunda	Hardap	Kalimbeza	Shadikon-goro	Shitemo	Sikondo	Mashare	Musese	Ndonga	ORIP	Vhungu
Field Crops (Grain)											
Maize	✓	X	X	✓	✓	✓	✓	✓	✓	X	✓
Wheat	✓	X	X	✓	✓	✓	✓	✓	✓	X	✓
Mahangu	✓	X	X	✓	X	✓		✓	✓	X	✓
Rice	✓	X	✓	X	X	X	X	X	X	X	X
Fruits											
Bananas	✓	X	X	X	X	X	X	X	X	X	X
Dates	X	X	X	X	X	X	X	X	X	✓	X
Grapes	X	X	X	X	X	X	X	X	X	✓	X
Vegetables											
Pumpkins	X	✓	X	X	✓	✓	✓	X	✓	✓	✓
Carrots	✓	✓	X	X	X	✓	X	X	X	✓	✓









Potatoes	✓	X	X	X	X	✓	X	X	X	X	✓	X	X	X
Sweet potatoes	✓	X	X	X	X	✓	X	X	X	X	✓	X	X	✓
Onions	✓	✓	X	X	X	✓	X	X	X	X	✓	X	X	✓
Butter-nuts	✓	✓	X	X	✓	✓	✓	X	X	X	✓	X	X	✓
Water melons	✓	✓	X	X	✓	✓	X	X	X	X	✓	X	X	✓
Sweet melons	✓	✓	X	X	X	✓	X	X	X	X	✓	X	X	✓
Cabbages	✓	✓	X	✓	X	✓	X	X	X	X	✓	X	X	✓
Lettuce	✓	X	X	X	X	X	X	X	X	X	✓	X	X	✓
Gem squash	✓	X	X	X	X	✓	X	✓	X	X	✓	X	X	✓
Beet roots	✓	✓	X	X	X	X	X	X	X	X	X	X	X	✓
Spinach	✓	✓	X	X	X	X	X	X	X	X	X	X	X	✓
Ground Nuts	✓	X	X	X	X	X	X	X	X	X	X	X	X	X
Animal Fodder														
Lucerne	X	✓	X	X	X	X	X	X	X	X	X	X	X	X

✓ = Production takes place

X = No Production

8. CONTACT DETAILS

NAME	REGION	ADDRESS	CONTACT NUMBER
AGRIBUSDEV Head office	Khomas	35 Van der Bijl street, Northern Industry. P O Box 41006, Aus- s-pannplatz, Windhoek	 +264 61 424 800  info@greenscheme.org.na
Etunda Irrigation Project	Omusati	P O Box 503 Ruacana	 +264 65 258 828  etunda@iway.na
Hardap Irrigation Project	Hardap	P O Box 523 Mariental	 +264 63 242 197  lsinyepe@yahoo.com
Kalimbeza Rice Project	Zambezi	P O Box 2392 Katima-Mulilo	 +264811502149  kompelip@lycos.com
Mashare Irriga- tion Project	Kavango East	P O Box 1496 Windhoek	 +264 66 258671  llg@iway.na
Musese Irrigation Project	Kavango West	P O Box 492 Rundu	 +264 66 257500  sakka@iway.na
Ndonga-Linena Irrigation Project	Kavango East	P O Box 90560 Windhoek	 +264 66 264000  sshilyomunhu@gmail.com
Shadikongoro Irrigation Project	Kavango East	P O Box 5219 Divundu	 +264 66 259312  shadi@iway.na

NAME	REGION	ADDRESS	CONTACT NUMBER
Sikondo Irrigation Project	Kavango West	P O Box 2080 Rundu	 +264 81823 9915  sikondorustie@gmail.com
Shitemo Irrigation Project	Kavango East	P O Box 653 Windhoek	 +264 66 258 255  shitemo@iway.na
Orange River Irrigation Project (ORIP)	//Karas	P O Box 741 Aussenkehr	 +264 63 297604  f.conradie@coolfreshnamibiacom
Uvhungu Vhundu Irrigation Project	Kavango West	P/Bag 2096 Rundu	 +264 66 256 440  vungu@iway.na



P. O. Box 41006, Ausspannplatz, Windhoek
3507 Van der Bijl Street, Northern Industrial Area, Windhoek, Namibia

© 2015

Disclaimer: This brochure contains basic information about AGRIBUSDEV. The content of this brochure is subject to change at any time by factors that directly affect operations. For technical and in-depth information related to AGRIBUSDEV, please visit our premises or website www.agribusdev.org.na.